

International
Independent
Impartial

International Forensic
Centre of Excellence

inforce
international • independent • impartial

Atrocity Crime Investigation

- **Desktop Planning (AC11)**
- **Site Assessments (AC12)**
- **Site Investigation and Recovery (AC13)**
- **Mortuary Operation and Victim Identification (AC14)**
- **Capacity Building and Training (CA11)**
- **Advisory and Consultancy Services (GE16)**

www.inforce.org.uk

registered charity number: 1097435

DATA GATHERING

Before any forensic operations can begin, a thorough and detailed desktop investigation is required. The investment of sufficient time in this pre-operational phase will maximise the efficiency and benefit gained from the later stages of the investigation.

Data from a variety of sources should be gathered by investigators and scientists with experience in interviewing and in handling large amounts of complex data.



Inforce scientists will work with local investigating teams to collate the eye witness statements and documentary evidence that will provide the majority of the required information.

DATA ANALYSIS

The collated data requires detailed analysis by a team of experts. The range of expertise required will depend upon the nature of the crime under investigation and the data itself.

Inforce will co-ordinate the data analysis working with local agencies and providing scientific experts as appropriate. Eye witness statements will be analysed by experienced investigators, whilst numerical data will be evaluated by statisticians.

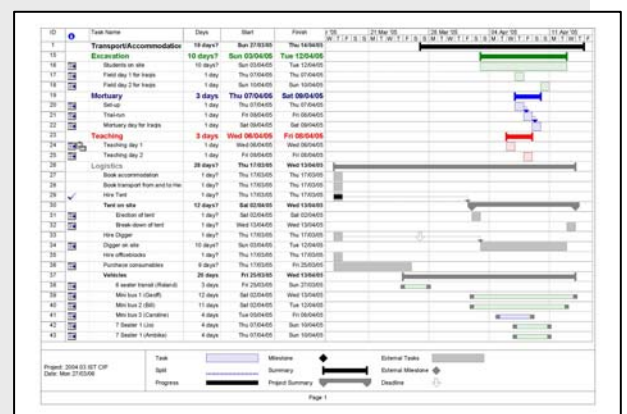


Scientific data will be analysed by experts in the appropriate fields. For example; maps may be evaluated by a geographer and geologist or population specific data by a cultural and biological anthropologist.

OPERATION PLANNING

Successful co-ordination and planning of such complex operations begins with the analysis of appropriate data. Each stage of the investigation can then be planned to achieve maximum benefit within the framework of an agreed operational plan detailing:

- Investigation sequence
- Logistics
- Team size and composition



Investment in detailed planning at an early stage will maximise the benefit gained whilst keeping expenditure within budget. Inforce has extensive experience and expertise in planning such operations and will work with investigating authorities to deliver the most effective investigation within available resources.

AREA LOCATION

Any forensic or humanitarian investigation of mass fatalities begins with locating a general area of interest as it is rare for the exact location of sites to be known. Areas of interest can be vast and it is imperative that boundaries are clearly defined before investigation of any sites can begin. Inforce will use a number of scientific and other methods to define an area of interest:

- Satellite imagery
- Air imagery
- Eye witness/survivor statements



Once the general area of interest has been defined, the task of locating sites of particular interest can begin.

SITE LOCATION

Most general areas of interest have multiple sites that could potentially yield forensic evidence. Each one will need to be investigated and defined by application of several different methods:

- Botanical surface assessment
- Zone prioritisation
- Geographical, geological and geophysical assessments
- Eye witness/survivor statements



Definition and analysis of the various types of sites is essential for the planning of the excavation phase in order to deliver an efficient and effective excavation phase.

SITE CONFIRMATION

During every investigation, the team will come across sites that contain a grave-like structure, but with no victims. There can be many reasons for this, and it emphasizes the need for every site to be confirmed or dismissed as a grave. Without this, the excavation phase cannot be reliably planned.

The most trusted method in archaeology for proving that a site is indeed a mass grave, is test trenching. By excavating a small trench or pit, the archaeologist



can confirm the presence or absence of multiple human remains. At this stage evidence is either collected for later analysis or recorded and buried again until the main excavation phase commences.

EVIDENCE RECOVERY

When investigating and excavating a mass grave or a series of individual graves, teams will always encounter a variety of evidence. All evidence uncovered is used to reconstruct the sequence of events that has taken place.

Some evidence comes in the form of physical objects, such as documents or ammunition. Other evidence is based on observations, such as tyre-tracks or mechanical digger buckets marks in the grave walls and floor. It is critical that all evidence is documented in great detail through photography, description, and measurement. Careful recovery, storage, and transport are also important.



VICTIM EXHUMATION

The other important reason to excavate mass graves is the recovery of the victims.

Each individual is entitled to a proper burial and as many as possible should be identified and re-united with their families. This also helps the surviving relatives in the process of closure and facilitates legal processes.

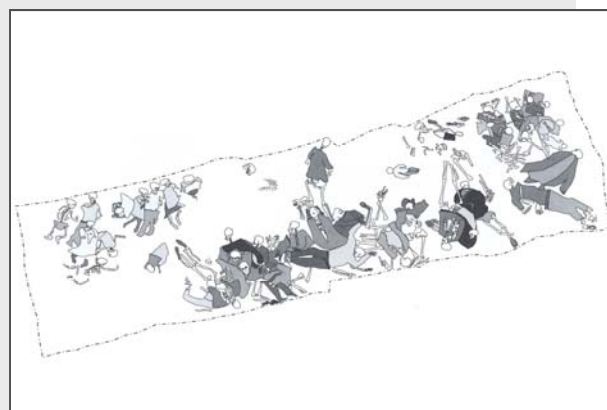
To ensure the best possible success rates in identification, the recovery of remains has to be to the highest standard. This will enable the experts in the mortuary to gather as much information about each individual as possible to be collated with ante-mortem data.



SITE ANALYSIS

Excavations of mass graves and the investigation of the surrounding forensic landscape usually produces hundreds or even thousands of items of evidence. In addition to that, each victim will produce more data. This vast wealth of data has to be carefully analysed to yield maximum information and secure accurate identification.

The volume of the data be daunting to courts, families or the general public. It is therefore essential for the supervisors and the head of the field team to be able to condense the data into a coherent form without losing any of the details. These findings are important to the mortuary team and to the overall operation.



MORTUARY OPERATION

In the mortuary or laboratory, the evidence that was collected in the field can be processed, analysed and stored. The number and type of specialists involved will depend on the nature of the evidence and victims recovered.

Inforce can establish a temporary mortuary near the grave site if necessary, or a permanent mortuary can be established for long term operations. Information gathered from the exhumation, the investigation and derived from the post-mortem analysis is used to:

- estimate the minimum number of individuals recovered from a site
- determine the biological profile of each individual
- identify individuals
- assess the cause and manner of death



POST-MORTEM ANALYSIS

Human remains may be recovered in varying stages of decomposition or skeletonisation, requiring different methods of analysis and storage.

One aim of a post-mortem examination is to identify the victims. Criteria such as age, sex, and height together with unique identifying characteristics (tattoos, previous injuries, dental work etc.) and details of clothing and personal effects are recorded. This is done through a series of systematic surveys using radiography, pathology, odontology and anthropology.



A further aim is to determine the cause and manner of death so that a death certificate can be issued and to gather forensic information to assist the investigation.

VICTIM IDENTIFICATION

The means by which an individual can be identify is limited by the information that can be gleaned about them from their families and how much can be gathered from the remains.

A comparison of dental radiographs to a victim's teeth, or a comparison of DNA from a living relative to those of the deceased can result in a positive identification. When only general information exists, such as age, sex, height etc or what they were last wearing, it may be possible to tentatively identify the deceased.



Cooperation between investigators, ante-mortem data collectors and mortuary staff is vital for successful victim identification.

TRAINING

Inforce can provide theoretical, classroom and practical training in all areas of the process of missing persons investigation:

Mission Planning: including logistics, health and safety, data sourcing and management.

Field Operations: training in the process of search and location, site analysis and the recovery and analysis of all material.

Mortuary and Identification Operations: Planning and commissioning temporary mortuaries for the examination of mass fatalities, control and analysis of human remains and other materials, the identification of the dead.

Investigative and Legal: techniques of evidence identification and collection, interviewing, and the law pertaining to the missing.



SIMULATIONS

Inforce has a successful track record of using simulations for capacity building. These are a convenient and safe way to train personnel in the processes of mass grave assessment, recovery, analysis and reporting. They are a training tool, with no associated legal, social or moral issues. Trainees' performance can be assessed. Any mistakes made do not effect identification or court cases, and they are cost effective alternative to training on real graves. Simulations can be designed for any requirement or experience level. They can be undertaken in any suitable environment and can be controlled for safety, speed, complexity and size.



Inforce can run simulations for a variety of needs including field operations, mortuary and identification operations and expert witness skills.

MENTORING

Inforce can co-ordinate, monitor and mentor scientific teams and processes to ensure that new skills are applied appropriately whilst assuring quality. This can be provided as part of our training programme or as a separate service. Mentoring ensures an efficient practical application of newly acquired skills on real missions, permitting a continuation of education and development of expertise.

Mentoring can be arranged on a long or short term basis providing continuing support for teams as they develop and grow in confidence and effectiveness.



Team members may further develop knowledge and skills by undertaking qualifications in forensic science, training and management at UK universities thus creating the capacity to form a local specialist forensic capability.

ASSESSMENT

Inforce offers advisory and consultancy services to guide clients in the areas of:

- Human rights violations
- Missing persons investigations
- Victim identification
- Related forensic science
- Training

Assessing the needs, capabilities and requirements of a client is the first step. Disasters, finding and identifying the missing, investigating crimes or human rights violations often require rapid solutions or can become imperative following policy and regime change.

Inforce can advise and assess the impact of an event or potential investigation in areas such as policy, inter-organisational coordination, international law, media liaison, resources, finance, and management.



PLANNING

Following assessment of capabilities and determination of requirements, Inforce can advise on the measures necessary to achieve successful investigative outcomes.

Operations involving site investigation and body recovery, victim and perpetrator data collection and identification are complex processes necessitating a detailed operational and logistics plan. Inforce offers advice throughout all stages of the planning processes which can include the following areas:

Desk top analysis; health and safety; risk assessment; security; terms of reference; logistics; transport and engineering; technical support; communications; finance; organisational structure; medical support; personnel; investigation management; scene management; facility management; liaison and coordination.



OPERATIONS

Following the detailed planning process, Inforce can advise on operational matters for both field and mortuary operations.

Operations of this type may vary in scale and intensive in terms of resources, staffing, finance and time.

Inforce have extensive experience in complex operations which may include: Deployment, remote imaging; survey; search; location; site confirmation; recovery of evidence and remains; ante mortem and post mortem data collection; crime scene analysis; chain of custody; logistics; transport; mortuary commissioning and analysis of evidence and remains; liaison with scientific facilities; sampling; family and community liaison; death certification; repatriation of remains; interviewing; reporting and presentation.



INFORCE'S HISTORY

Almost 203 million citizens were unlawfully killed by governments in the twentieth century; a number that is, unfortunately, likely to be matched in the first century of the new millennium.

The Inforce Foundation was founded in 2001, born out of the collective experience of a group of forensic specialists active in the investigation of crimes against humanity, war crimes and genocide since the mid 1990s.

Between us, Inforce personnel have worked with a multiplicity of national and international organisations (government and NGOs) initiating and undertaking such work.

Inforce has operated in a variety of countries, such as Iraq, Cyprus, or DR Congo locating and investigating crime scenes, identifying the deceased and educating and training local forensic teams to carry on this vital role.

WHO ARE WE?

The Inforce Foundation is a movement of scientists, lawyers and others committed to upholding human rights and creating a future for all that is free from fear, oppression and murder. We are fortunate in having an impressive and diverse range of supporters, patrons and advisors.

MISSION STATEMENT

To provide a centre of expertise for the location, recovery and identification of victims of atrocities on a world wide basis.

To enable legitimate legal authorities to proceed with the prosecution of alleged perpetrators.

To satisfy the humanitarian need of families and communities to bury their dead.

To provide education; for practitioners and as a means of empowering survivor groups.



Inforce Foundation
Melbury House
1-3 Oxford Road
Dorset
BH8 8ES
United Kingdom

Phone: +44 (0)1202 961342
Fax: +44 (0)1202 961339
E-mail: info@inforce.org.uk
www.inforce.org.uk